



## Kowen LED

### Paintable & Printable LED Baffle

Ever since modern acoustic solutions have entered into the conversation, architects and designers have been locked into the colors, patterns, and textures of the manufacturers. Kowen puts the decision making for space making back in the hands of those who should have it.

The surface is fully paintable to match the color story of any space. But we wanted to give you full customization so we developed the ability to print directly on the surface. Print wood grain, textures, color, or graphics. And if that's not enough, Kowen LED features a gorgeous embedded, continuous, dimmable, warm white LED light strip. Kowen is the Swiss Army Knife of the acoustics world.

#### Features

- Integrated LED light solves for sound and light
- Paintable with any Sherwin Williams standard colors. Custom colors also available
- The same great NRC value as other Sonus baffles
- Print wood grain, color, or graphics directly to the surface
- Lightweight, making install a breeze

# Kowen



|                   |  |
|-------------------|--|
| Size              | Length: 46", 94". Height: 9", 12", 16"   |
| Thickness         | 2.25"  |
| Weight            | 2.6 lbs per sq ft  |
| Tolerance         | +/- 1/16"  |
| Core              | Comprised of 6–7 pcf fiberglass known for it’s high-performing sound absorption capabilities, thermal properties, and high dimensional stability. Acoustical facer board (1/8") adds rigidity and strength to our core acoustic substrate. |
| Edge Detail       | Hardened   |
| Surface Detail    | Painted or Digitally Printed   |
| Installation Type | Suspended  |
| Fire Performance  | Class A  |
| NRC               | 1.35 for 12" oc, .75 for 24" oc  |
| Unit of Sale      | Per Carton: 4  |

\* Sonus provides aircraft cable supported attachment hardware (GripLock ®) on baffle side. Installer is responsible for the ceiling hardware and 1/16" aircraft cable to suspend the baffle.



## Our Craftsmanship Guarantee is really simple:

If there is a craftsmanship defect detected, we will repair or replace the impacted product.

If the product was damaged during shipping and it was because of how we packaged it, we will repair or replace the impacted product.

The length of our guarantee is five (5) years provided you used a Certified PRO Installer; otherwise, it is a standard three (3) years.



## Lead Time

Standard Sizes and Coverings: 2–3 Weeks  
Custom Sizes and Coverings: 6–8 Weeks\*

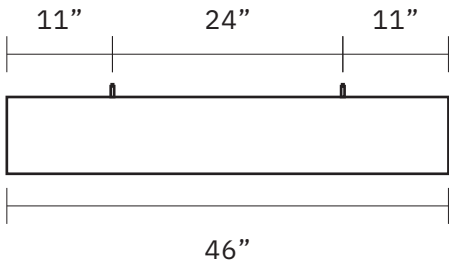
\*any customer supplied coverings may require additional time for delivery and testing. Additionally, wood veneers require perforation. Anything not in stock requires an additional 4–6 weeks.



## Custom Shop

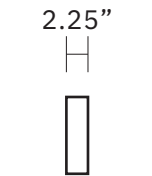
Need something unique? Want to co-create actionable solutions that improve the human experience? We believe, together, we can ideate, design, and build solutions that create unique experiences. Call us to discuss our Custom Shop program.

# Kowen



Front View

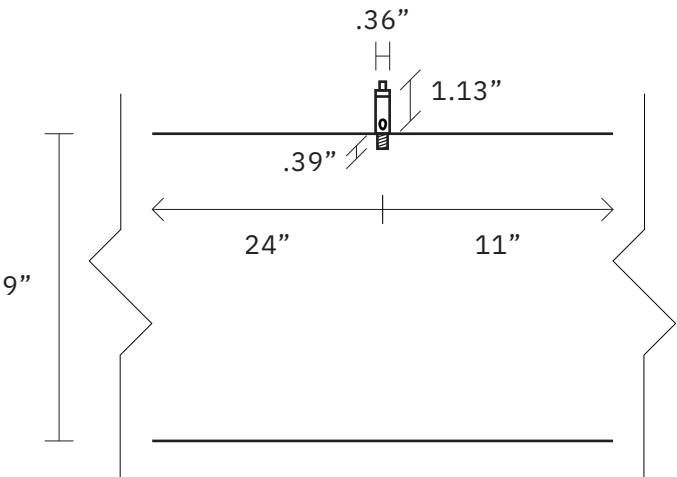
1:20 scale



Side View

1:20 scale

GripLock® 15Z-1420e-394-T2  
Cable Grippers Shown



Hardware Cross Section Detail View

1:5 scale

GripLock® 15Z-1420e-394-T2 Cable Grippers  
Shown

## Standard Paint Colors

|  |  |   |   |  |
|--|--|---|---|--|
| <br>SW 7005<br>Pure White | <br>SW 6991<br>Black Magic  | <br>SW 2821<br>Downing Stone | <br>SW 6640<br>Tangerine | <br>SW 6737<br>Kiwi       |
| <br>SW 6530<br>Revel Blue | <br>SW 7588<br>Show Stopper | <br>SW 9092<br>Iced Mocha    | <br>SW 6180<br>Oakmoss   | <br>SW 7122<br>Lemon Drop |

# Kowen

## LED Specs

- Continuous lighting strips—Hotspot-free appearance (even in low profile channels)
- Correlated color temperature (CCT): 3,000K (warm white)
- Fully dimmable (dimmer sold separately)
- UL Listed and RoHS
- 90 watts per reel | 18 watts per meter | ~6 watts per foot 7350 lumens per reel | 1470 lumens per meter
- Power supply varies by application (sold separately). We generally recommend using a power supply rated for at least 20% higher wattage than the lighting. We recommend and can supply Meanwell products. Keeping drivers close to lighting helps prevent voltage drop issues.
- Baffle suspension has integrated low-voltage wire—length from baffle to ceiling required at time of order.

Sonus' responsibility of lighting ends with low volt wire to the ceiling. An electrician is responsible for identifying correct wiring, power supply, and connections to a power source. Sonus can supply Driver and Dimmer upon request or the electrician can supply.

## GripLock® 15Z-1420e-394-T2 Cable Gripper Specs

- Side cable exit Gripper
- 1/4-20 x 0.394" external thread
- For use with 3/64" – 1/16" 7 x 7 or 7 x 19 aircraft cable only
- Standard release
- Color: silver
- Hardware installed on 24" or 48" oc for standard sizes
- Installer responsible for aircraft wire and ceiling-side mounts (Sonus can supply on request)



## Cablegrippers® LV-SE-1/4-20 K-Grip Specs

- Integrated suspension and power cable
- Class II low voltage power
- Highly flexible Kevlar reinforced twin conductor K-Cord
- UL certification for safe working loads of up to 10lbs. per cable
- Hardware installed on 24" or 48" oc for standard sizes
- Installer responsible for ceiling-side mounts (Sonus can supply on request)

